

Springwell Solar Farm

ES Volume 2: Figures

Chapter 7: Biodiversity

APFP Regulation 5(2)(a)

Planning Act 2008

Infrastructure Planning
(Applications: Prescribed Forms
and Procedure) Regulations 2009

EN010149/APP/6.2

November 2024

Springwell Energyfarm Ltd



ES Volume 2: Figures

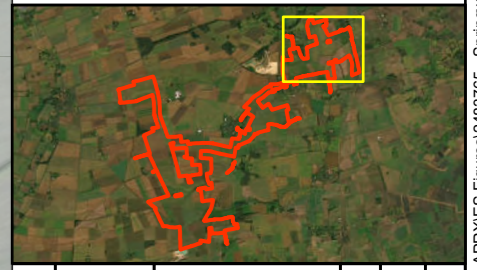
Chapter 7: Biodiversity

Drawing number	Revision number	Drawing title	Scale
Figure 7.1	01	Local Wildlife Sites and Areas Proposed for Vegetation Removal	A3
Figure 7.2	01	Bat GLTA and Areas Proposed for Vegetation Removal	A3
Figure 7.3	01	Ditches Surveyed and Areas Proposed for Vegetation Removal	A3
Figure 7.4	01	Important Hedgerow Survey and Areas Proposed for Vegetation Removal	A3



- LEGEND:**
- Order Limits
 - Indicative Boundary of Local Wildlife Site (LWS)
 - Proposed Indicative Location for Vegetation Removal

**Blankney
Brick Pit**



Rev	Date	Description	Drn	Chk	App
01	NOV 2024	DCO SUBMISSION	RSK	RSK	EDF

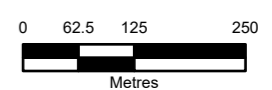
Springwell Solar Farm



DOCUMENT:
ENVIRONMENTAL STATEMENT
VOLUME 2: FIGURES
REGULATION 5(2)(a)

TITLE:
FIGURE 7.1 LOCAL WILDLIFE SITES AND
AREAS PROPOSED FOR VEGETATION
REMOVAL, PAGE 1 OF 8

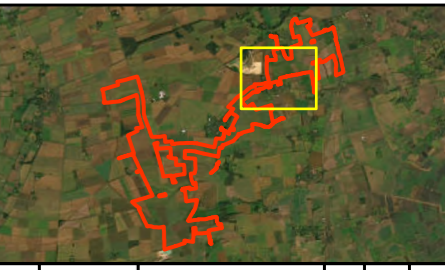
PINS REFERENCE NUMBER:
EN010149/APP/6.2



REV 01



LEGEND:
 Order Limits
 Proposed Indicative Location for Vegetation Removal



Rev	Date	Description	Drn	Chk	App
01	NOV 2024	DCO SUBMISSION	RSK	RSK	EDF

Springwell Solar Farm

DOCUMENT:
 ENVIRONMENTAL STATEMENT
 VOLUME 2: FIGURES
 REGULATION 5(2)(a)

TITLE:
 FIGURE 7.1 LOCAL WILDLIFE SITES AND
 AREAS PROPOSED FOR VEGETATION
 REMOVAL, PAGE 2 OF 8

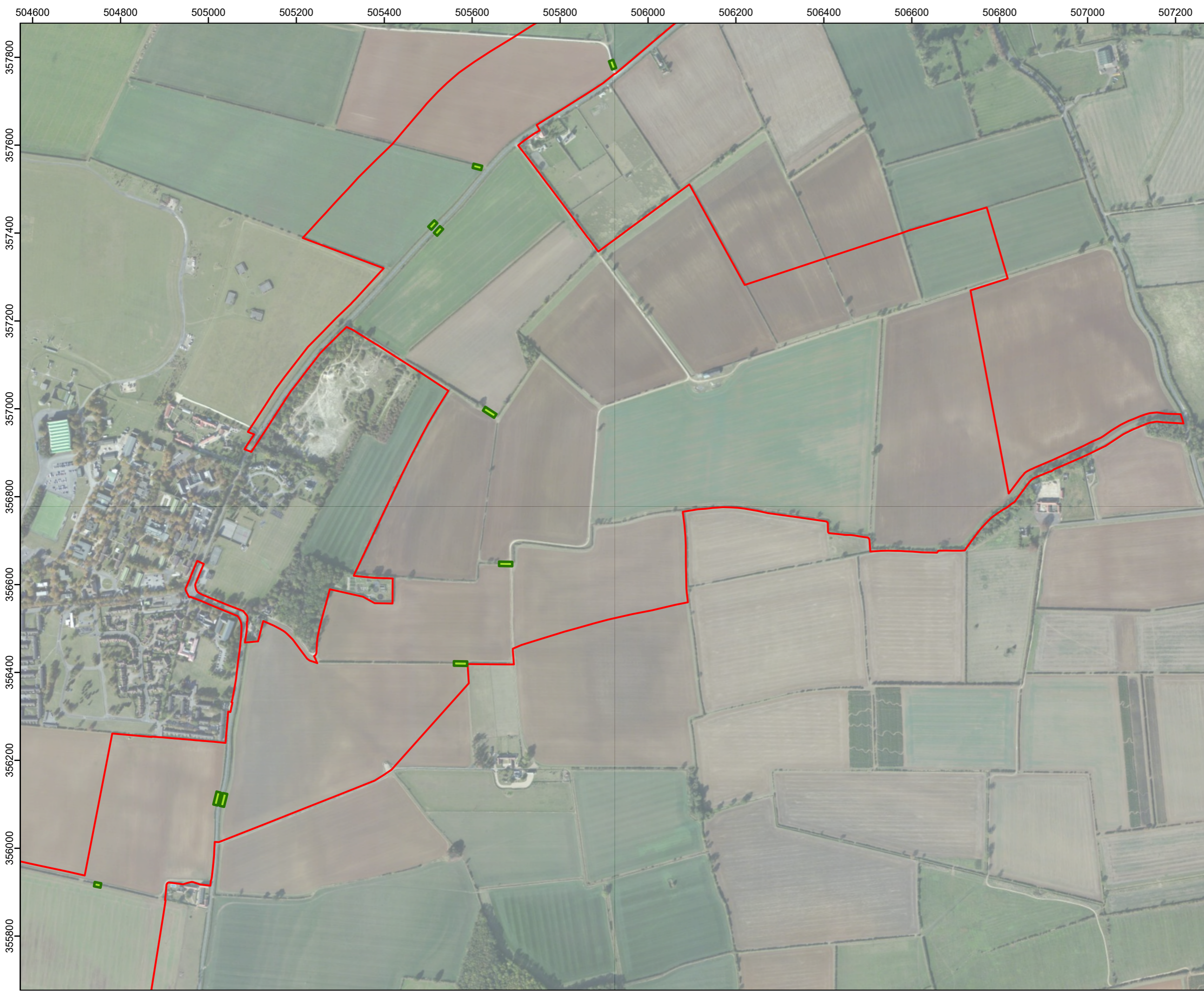
PINS REFERENCE NUMBER:
 EN010149/APP/6.2

0 55 110 220

Metres

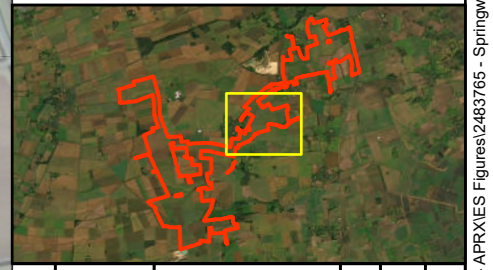
Scale: 1:8,000 @ A3

REV 01



LEGEND:

- Order Limits
- Proposed Indicative Location for Vegetation Removal



Rev	Date	Description	Drn	Chk	App
01	NOV 2024	DCO SUBMISSION	RSK	RSK	EDF

Springwell Solar Farm

DOCUMENT:
ENVIRONMENTAL STATEMENT
VOLUME 2: FIGURES
REGULATION 5(2)(a)

TITLE:
FIGURE 7.1 LOCAL WILDLIFE SITES AND
AREAS PROPOSED FOR VEGETATION
REMOVAL, PAGE 3 OF 8

PINS REFERENCE NUMBER:
EN010149/APP/6.2

0 55 110 220

Metres

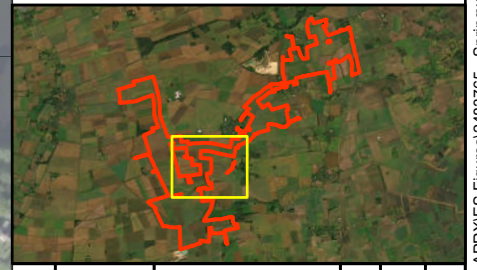
Scale: 1:8,000 @ A3

REV 01



LEGEND:

- Order Limits
- Indicative Boundary of Local Wildlife Site (LWS)
- Proposed Indicative Location for Vegetation Removal



Rev	Date	Description	Drn	Chk	App
01	NOV 2024	DCO SUBMISSION	RSK	RSK	EDF

Springwell Solar Farm

DOCUMENT:
ENVIRONMENTAL STATEMENT
VOLUME 2: FIGURES
REGULATION 5(2)(a)

TITLE:
FIGURE 7.1 LOCAL WILDLIFE SITES AND
AREAS PROPOSED FOR VEGETATION
REMOVAL, PAGE 4 OF 8

PINS REFERENCE NUMBER:
EN010149/APP/6.2

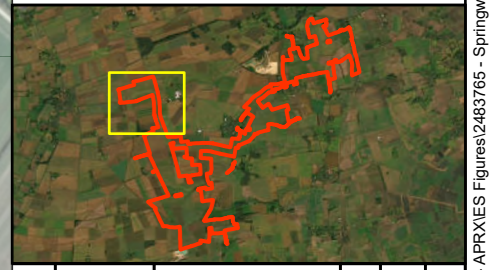
Scale: 1:8,000 @ A3

REV 01



LEGEND:

- Order Limits
- Indicative Boundary of Local Wildlife Site (LWS)
- Proposed Indicative Location for Vegetation Removal



Rev	Date	Description	Drn	Chk	App
01	NOV 2024	DCO SUBMISSION	RSK	RSK	EDF

Springwell Solar Farm

DOCUMENT:
ENVIRONMENTAL STATEMENT
VOLUME 2: FIGURES
REGULATION 5(2)(a)

TITLE:
FIGURE 7.1 LOCAL WILDLIFE SITES AND
AREAS PROPOSED FOR VEGETATION
REMOVAL, PAGE 5 OF 8

PINS REFERENCE NUMBER:
EN010149/APP/6.2

0 55 110 220

Metres

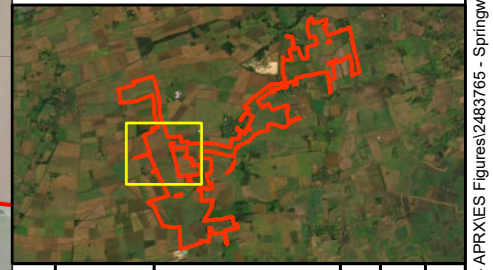
Scale: 1:8,000 @ A3

REV 01



LEGEND:

- Order Limits
- Indicative Boundary of Local Wildlife Site (LWS)
- Proposed Indicative Location for Vegetation Removal



Rev	Date	Description	Drn	Chk	App
01	NOV 2024	DCO SUBMISSION	RSK	RSK	EDF

Springwell Solar Farm

DOCUMENT:
ENVIRONMENTAL STATEMENT
VOLUME 2: FIGURES
REGULATION 5(2)(a)

TITLE:
FIGURE 7.1 LOCAL WILDLIFE SITES AND
AREAS PROPOSED FOR VEGETATION
REMOVAL, PAGE 6 OF 8

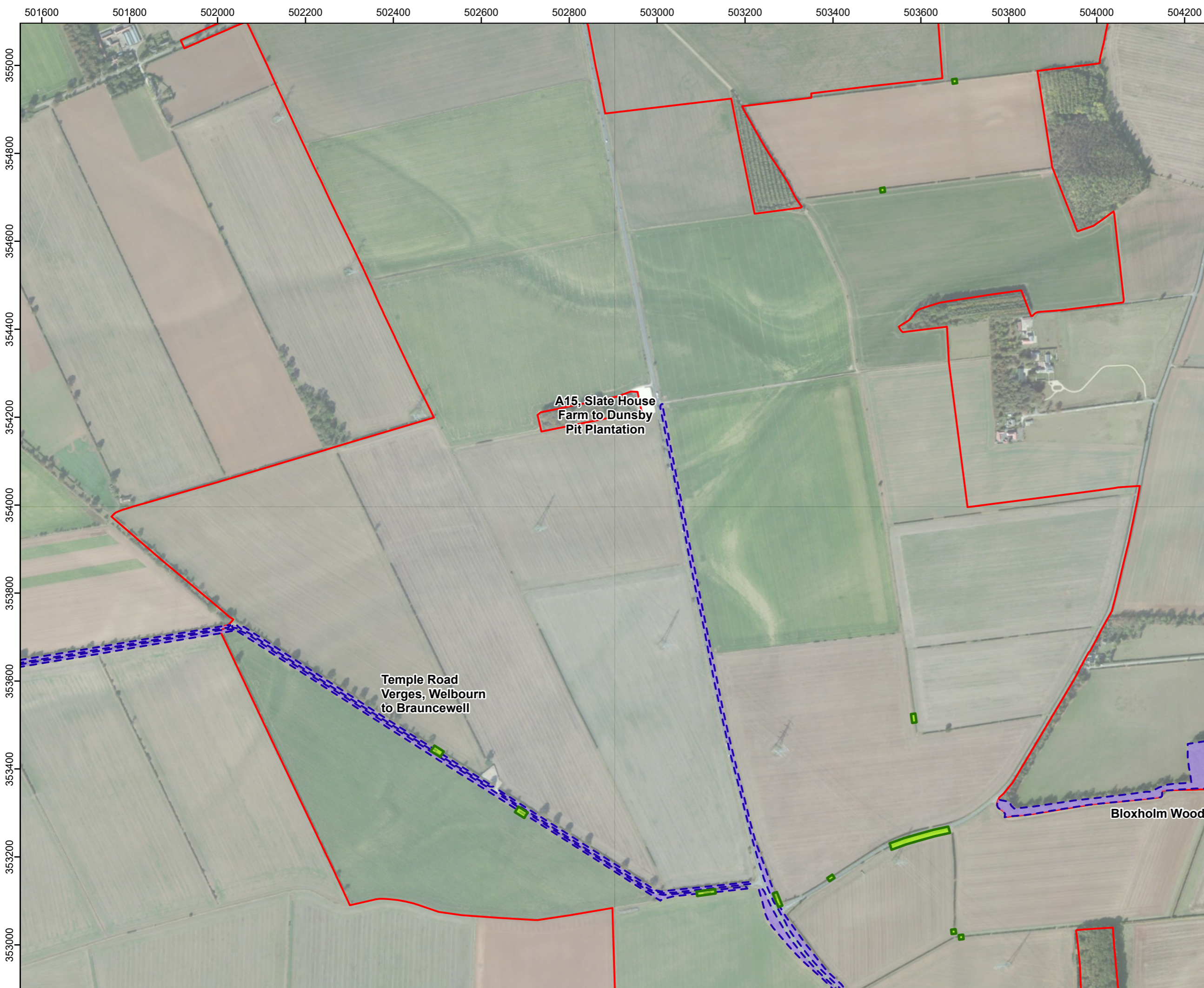
PINS REFERENCE NUMBER:
EN010149/APP/6.2

0 55 110 220

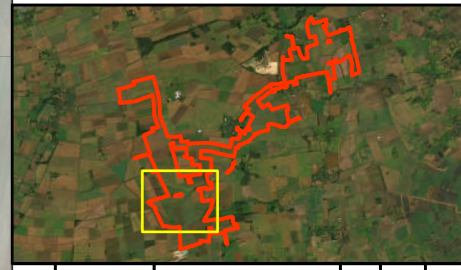
Metres

Scale: 1:8,000 @ A3

REV 01



- LEGEND:**
- Order Limits
 - Indicative Boundary of Local Wildlife Site (LWS)
 - Proposed Indicative Location for Vegetation Removal



01	NOV 2024	DCO SUBMISSION	RSK	RSK	EDF
Rev	Date	Description	Drn	Chk	App

Springwell Solar Farm

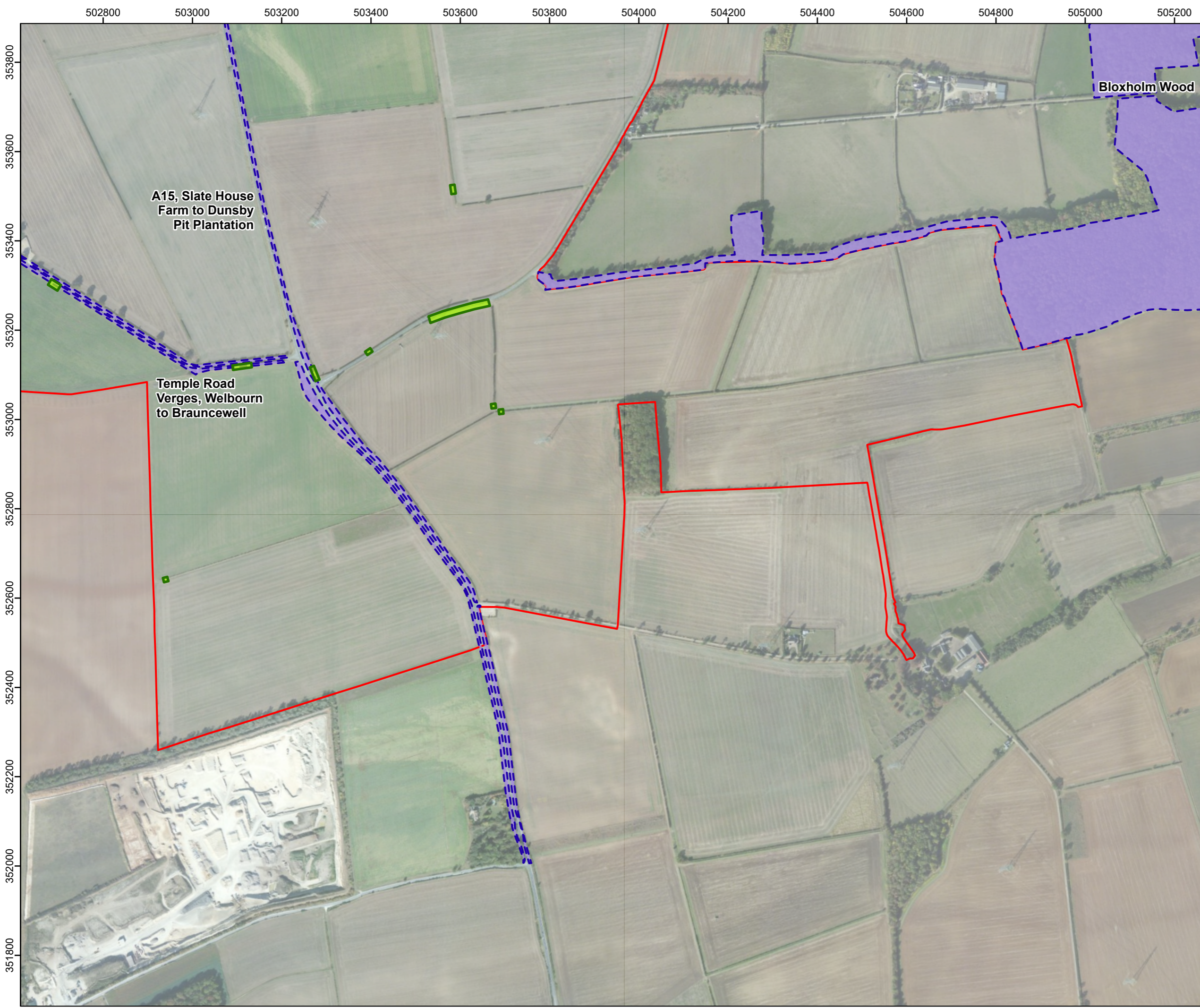
DOCUMENT:
ENVIRONMENTAL STATEMENT
VOLUME 2: FIGURES
REGULATION 5(2)(a)

TITLE:
FIGURE 7.1 LOCAL WILDLIFE SITES AND
AREAS PROPOSED FOR VEGETATION
REMOVAL, PAGE 7 OF 8

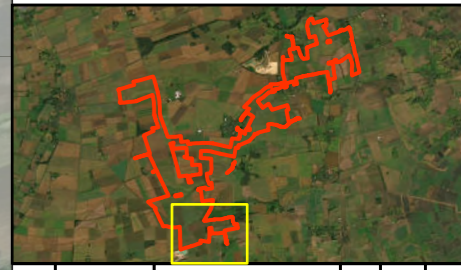
PINS REFERENCE NUMBER:
EN010149/APP/6.2

Scale: 1:8,000 @ A3

REV 01



- LEGEND:**
- Order Limits
 - Indicative Boundary of Local Wildlife Site (LWS)
 - Proposed Indicative Location for Vegetation Removal



Rev	Date	Description	Drn	Chk	App
01	NOV 2024	DCO SUBMISSION	RSK	RSK	EDF

Springwell Solar Farm

DOCUMENT:
ENVIRONMENTAL STATEMENT
VOLUME 2: FIGURES
REGULATION 5(2)(a)

TITLE:
FIGURE 7.1 LOCAL WILDLIFE SITES AND
AREAS PROPOSED FOR VEGETATION
REMOVAL, PAGE 8 OF 8

PINS REFERENCE NUMBER:
EN010149/APP/6.2

Scale: 1:8,000 @ A3

REV 01

506800 507000 507200 507400 507600 507800 508000 508200 508400 508600 508800 509000 509200 509400

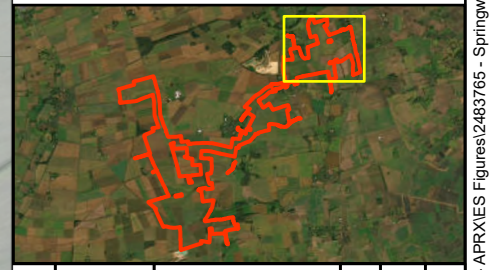


LEGEND:

- Order Limits
- Proposed Indicative Location for Vegetation Removal

Tree Suitability

- High
- Moderate
- Low



Rev	Date	Description	Drn	Chk	App
01	NOV 2024	DCO SUBMISSION	RSK	RSK	EDF

Springwell Solar Farm

DOCUMENT:
ENVIRONMENTAL STATEMENT
VOLUME 2: FIGURES
REGULATION 5(2)(a)

TITLE:
FIGURE 7.2 BAT GROUND LEVEL TREE
ASSESSMENT AND AREAS PROPOSED
FOR VEGETATION REMOVAL, PAGE 1 OF 8

PINS REFERENCE NUMBER:
EN010149/APP/6.2

0 62.5 125 250

Metres

Scale: 1:8,500 @ A3

REV 01

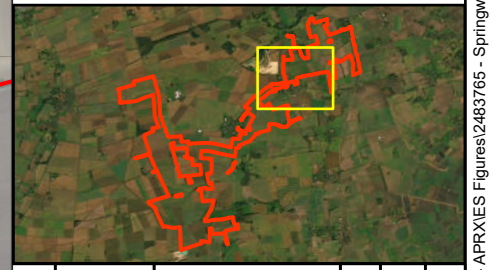


LEGEND:

- Order Limits
- Proposed Indicative Location for Vegetation Removal

Tree Suitability

- High
- Moderate
- Low



Rev	Date	Description	Drn	Chk	App
01	NOV 2024	DCO SUBMISSION	RSK	RSK	EDF

Springwell Solar Farm

DOCUMENT:
ENVIRONMENTAL STATEMENT
VOLUME 2: FIGURES
REGULATION 5(2)(a)

TITLE:
FIGURE 7.2 BAT GROUND LEVEL TREE
ASSESSMENT AND AREAS PROPOSED
FOR VEGETATION REMOVAL, PAGE 2 OF 8

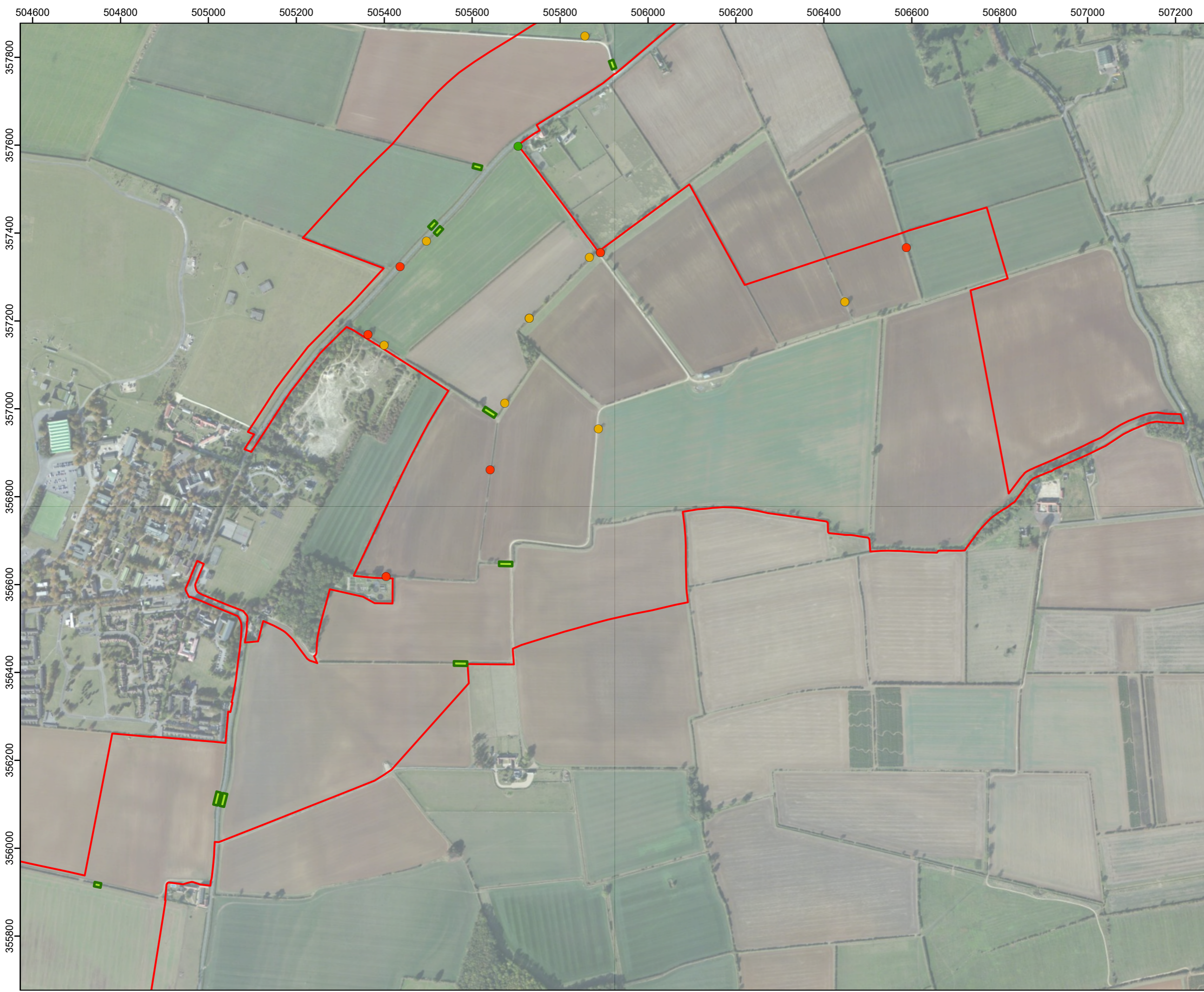
PINS REFERENCE NUMBER:
EN010149/APP/6.2

0 55 110 220

Metres

Scale: 1:8,000 @ A3

REV 01

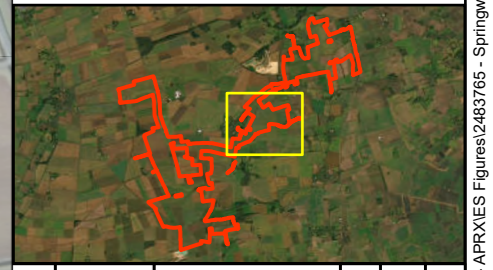


LEGEND:

- Order Limits
- Proposed Indicative Location for Vegetation Removal

Tree Suitability

- High
- Moderate
- Low



Rev	Date	Description	Drn	Chk	App
01	NOV 2024	DCO SUBMISSION	RSK	RSK	EDF

Springwell Solar Farm

DOCUMENT:
ENVIRONMENTAL STATEMENT
VOLUME 2: FIGURES
REGULATION 5(2)(a)

TITLE:
FIGURE 7.2 BAT GROUND LEVEL TREE
ASSESSMENT AND AREAS PROPOSED
FOR VEGETATION REMOVAL, PAGE 3 OF 8

PINS REFERENCE NUMBER:
EN010149/APP/6.2

0 55 110 220

Metres

Scale: 1:8,000 @ A3

REV 01

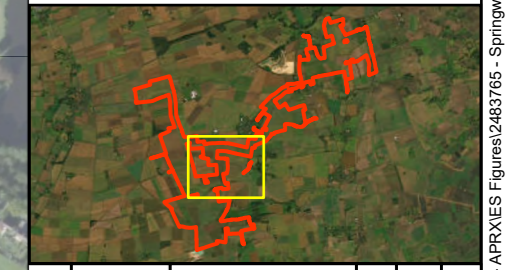


LEGEND:

- Order Limits
- Proposed Indicative Location for Vegetation Removal

Tree Suitability

- High
- Moderate
- Low



Rev	Date	Description	Drn	Chk	App
01	NOV 2024	DCO SUBMISSION	RSK	RSK	EDF

Springwell Solar Farm

DOCUMENT:
ENVIRONMENTAL STATEMENT
VOLUME 2: FIGURES
REGULATION 5(2)(a)

TITLE:
FIGURE 7.2 BAT GROUND LEVEL TREE
ASSESSMENT AND AREAS PROPOSED
FOR VEGETATION REMOVAL, PAGE 4 OF 8

PINS REFERENCE NUMBER:
EN010149/APP/6.2

0 55 110 220

Metres

Scale: 1:8,000 @ A3

REV 01

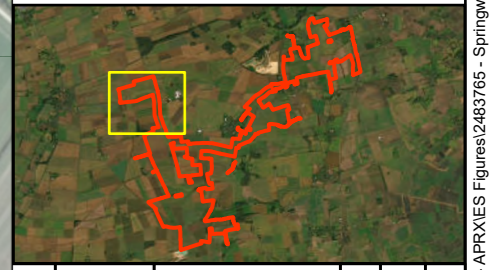


LEGEND:

- Order Limits
- Proposed Indicative Location for Vegetation Removal

Tree Suitability

- High
- Moderate
- Low



Rev	Date	Description	Drn	Chk	App
01	NOV 2024	DCO SUBMISSION	RSK	RSK	EDF

Springwell Solar Farm

DOCUMENT:
ENVIRONMENTAL STATEMENT
VOLUME 2: FIGURES
REGULATION 5(2)(a)

TITLE:
FIGURE 7.2 BAT GROUND LEVEL TREE
ASSESSMENT AND AREAS PROPOSED
FOR VEGETATION REMOVAL, PAGE 5 OF 8

PINS REFERENCE NUMBER:
EN010149/APP/6.2

0 55 110 220

Metres

Scale: 1:8,000 @ A3

REV 01

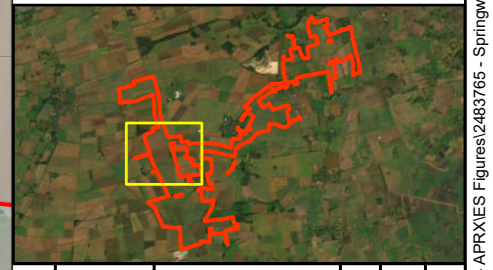


LEGEND:

- Order Limits
- Proposed Indicative Location for Vegetation Removal

Tree Suitability

- High
- Moderate
- Low



Rev	Date	Description	Drn	Chk	App
01	NOV 2024	DCO SUBMISSION	RSK	RSK	EDF

Springwell Solar Farm

DOCUMENT:
ENVIRONMENTAL STATEMENT
VOLUME 2: FIGURES
REGULATION 5(2)(a)

TITLE:
FIGURE 7.2 BAT GROUND LEVEL TREE
ASSESSMENT AND AREAS PROPOSED
FOR VEGETATION REMOVAL, PAGE 6 OF 8

PINS REFERENCE NUMBER:
EN010149/APP/6.2

0 55 110 220

Metres

Scale: 1:8,000 @ A3

REV 01

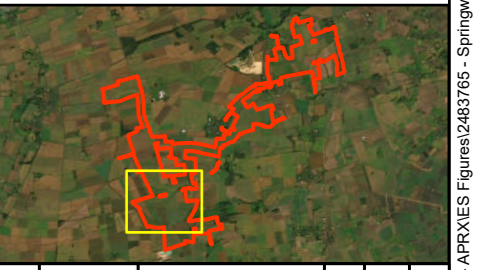


LEGEND:

- Order Limits
- Proposed Indicative Location for Vegetation Removal

Tree Suitability

- High
- Moderate
- Low



Rev	Date	Description	Drn	Chk	App
01	NOV 2024	DCO SUBMISSION	RSK	RSK	EDF

Springwell Solar Farm

DOCUMENT:
ENVIRONMENTAL STATEMENT
VOLUME 2: FIGURES
REGULATION 5(2)(a)

TITLE:
FIGURE 7.2 BAT GROUND LEVEL TREE
ASSESSMENT AND AREAS PROPOSED
FOR VEGETATION REMOVAL, PAGE 7 OF 8

PINS REFERENCE NUMBER:
EN010149/APP/6.2

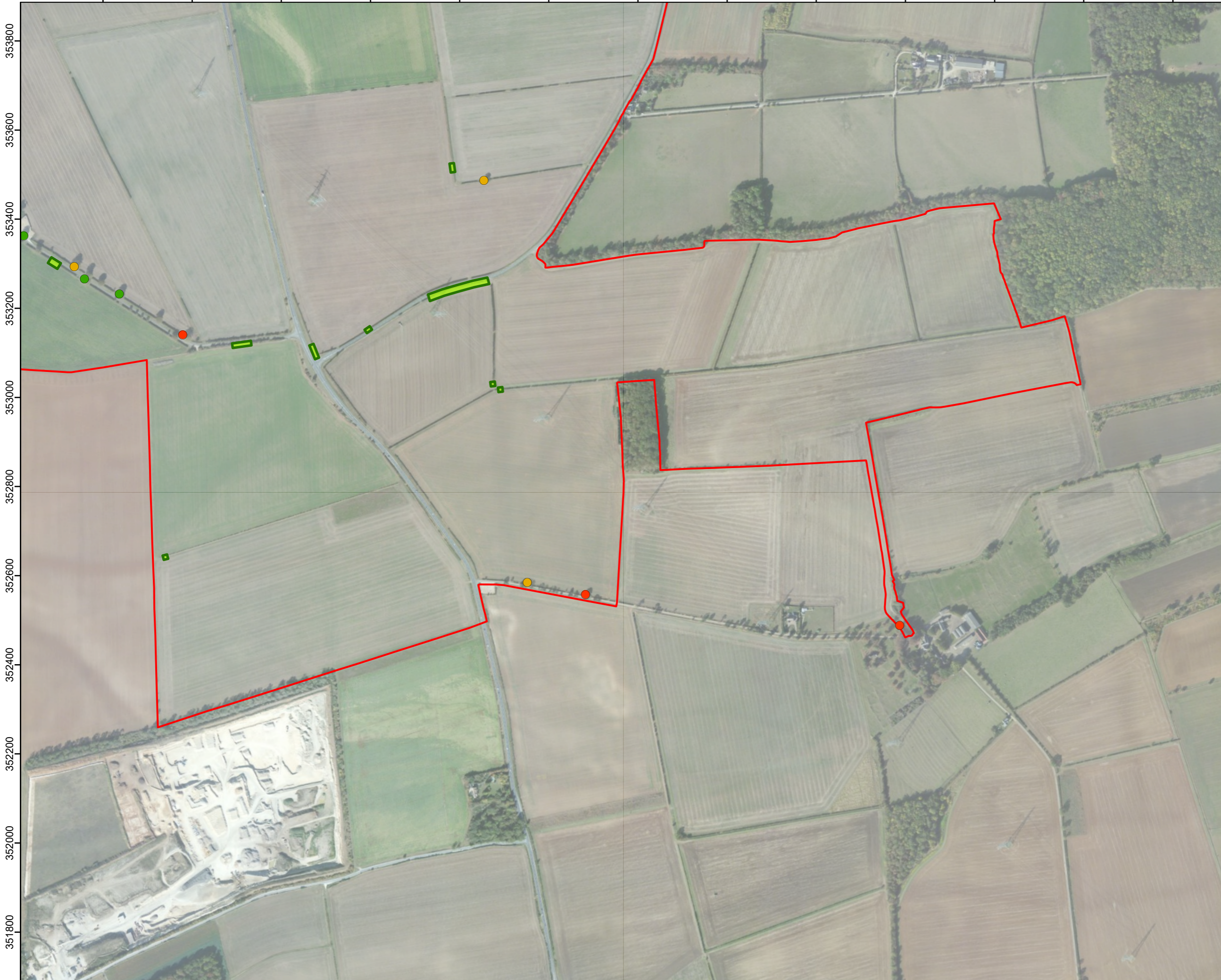
0 55 110 220

Metres

Scale: 1:8,000 @ A3

REV 01

502800 503000 503200 503400 503600 503800 504000 504200 504400 504600 504800 505000 505200

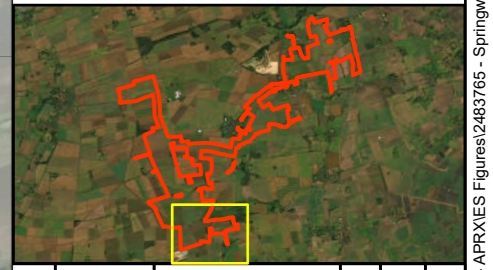


LEGEND:

- Order Limits
- Proposed Indicative Location for Vegetation Removal

Tree Suitability

- High
- Moderate
- Low



01	NOV 2024	DCO SUBMISSION	RSK	RSK	EDF
Rev	Date	Description	Drn	Chk	App

Springwell Solar Farm

DOCUMENT:
ENVIRONMENTAL STATEMENT
VOLUME 2: FIGURES
REGULATION 5(2)(a)

TITLE:
FIGURE 7.2 BAT GROUND LEVEL TREE
ASSESSMENT AND AREAS PROPOSED
FOR VEGETATION REMOVAL, PAGE 8 OF 8

PINS REFERENCE NUMBER:
EN010149/APP/6.2

0 55 110 220

Metres

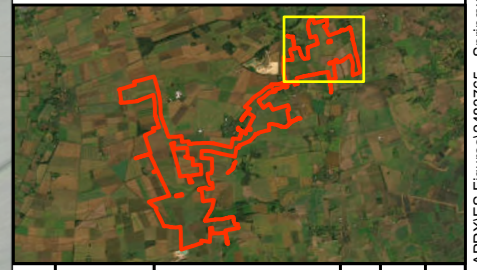
Scale: 1:8,000 @ A3

REV 01



LEGEND:

- Order Limits
- Proposed Indicative Location for Vegetation Removal
- Watercourses



Rev	Date	Description	Drn	Chk	App
01	NOV 2024	DCO SUBMISSION	RSK	RSK	EDF

Springwell Solar Farm

DOCUMENT:
ENVIRONMENTAL STATEMENT
VOLUME 2: FIGURES
REGULATION 5(2)(a)

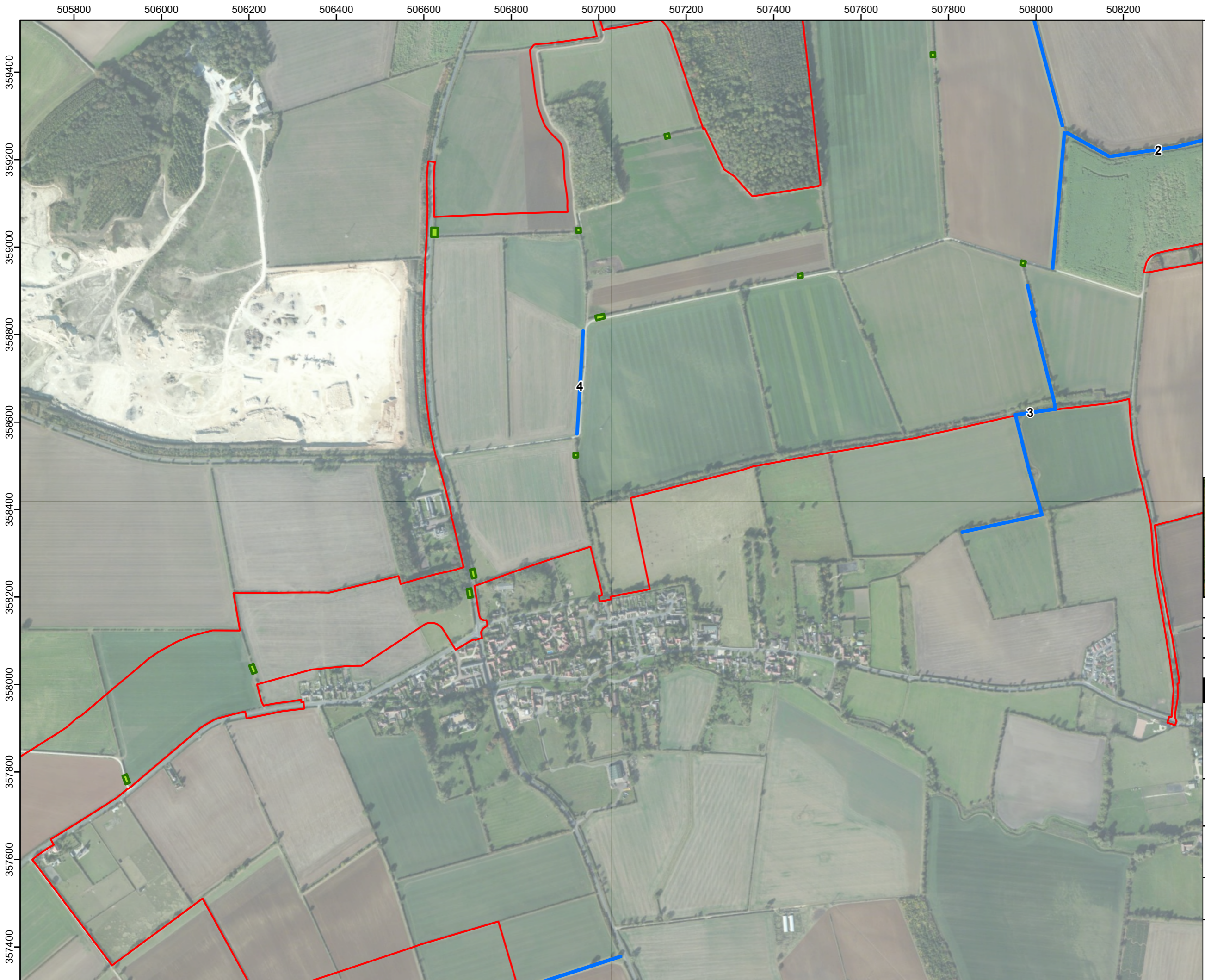
TITLE:
FIGURE 7.3 DITCHES SURVEYED AND
AREAS PROPOSED FOR VEGETATION
REMOVAL, PAGE 1 OF 8

PINS REFERENCE NUMBER:
EN010149/APP/6.2

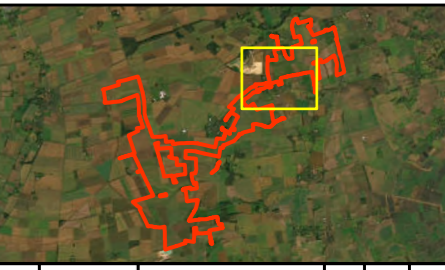
Scale: 1:35,000 @ A3

REV 01

Path: C:\Users\rebekah.smyth\OneDrive - RSK Group\06 GIS - EDF Solar Springwell (aka Acre Lane)\03 - APRXIES Figures\2483765 - Springwell Solar - Figure 7.3 - Ditches Surveyed and Areas Proposed for Vegetation Removal.aprx[empty]



- LEGEND:**
- Order Limits
 - Proposed Indicative Location for Vegetation Removal
 - Watercourses



Rev	Date	Description	Drn	Chk	App
01	NOV 2024	DCO SUBMISSION	RSK	RSK	EDF

Springwell Solar Farm

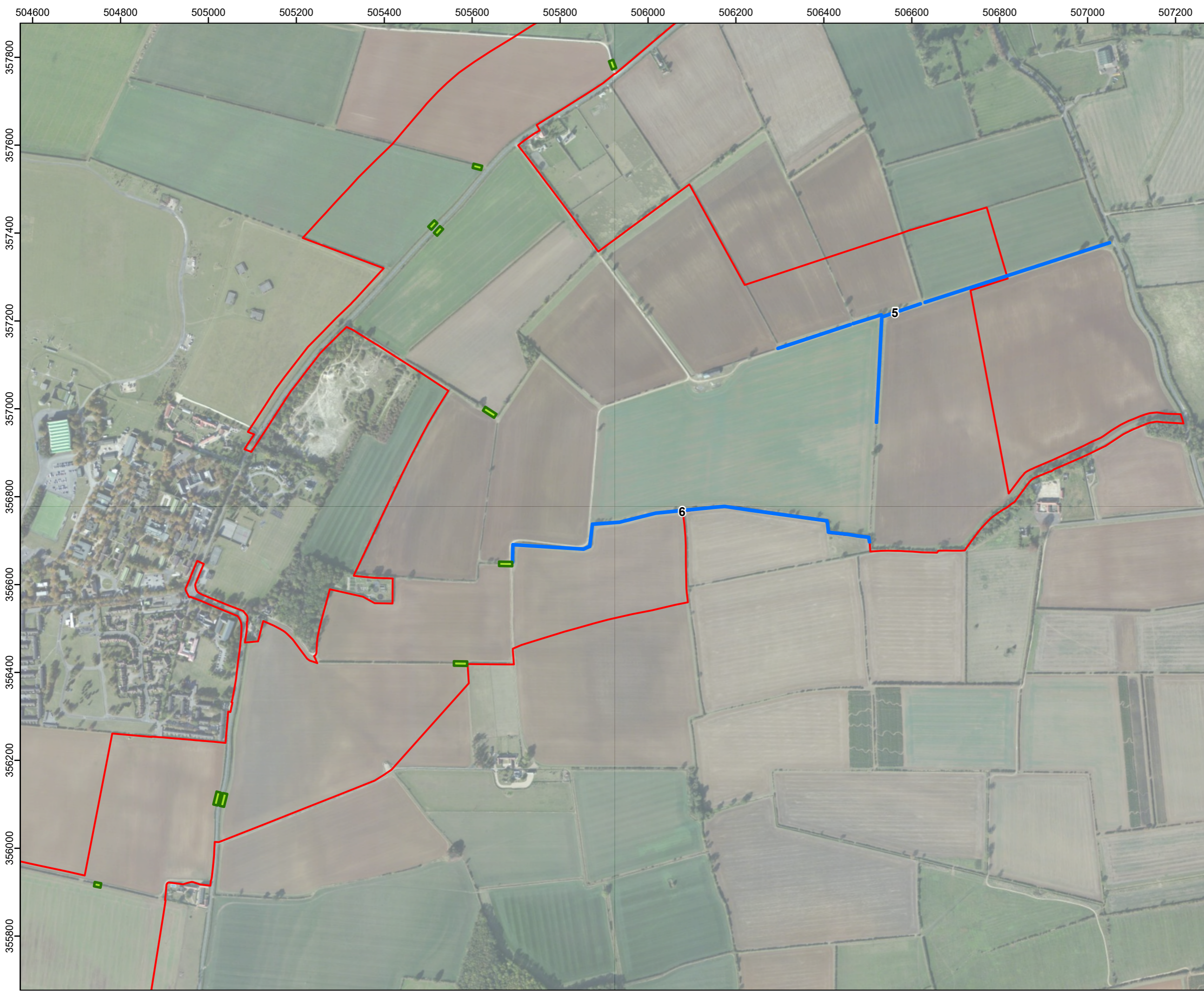
DOCUMENT:
ENVIRONMENTAL STATEMENT
VOLUME 2: FIGURES
REGULATION 5(2)(a)

TITLE:
FIGURE 7.3 DITCHES SURVEYED AND
AREAS PROPOSED FOR VEGETATION
REMOVAL, PAGE 2 OF 8

PINS REFERENCE NUMBER:
EN010149/APP/6.2

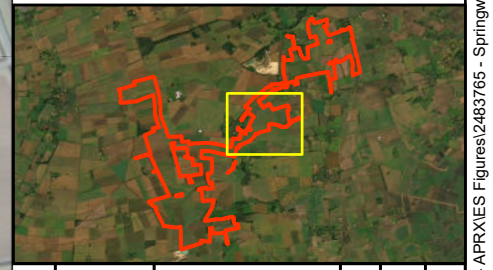
Scale: 1:35,000 @ A3

REV 01



LEGEND:

- Order Limits
- Proposed Indicative Location for Vegetation Removal
- Watercourses



Rev	Date	Description	Drn	Chk	App
01	NOV 2024	DCO SUBMISSION	RSK	RSK	EDF

Springwell Solar Farm

DOCUMENT:
ENVIRONMENTAL STATEMENT
VOLUME 2: FIGURES
REGULATION 5(2)(a)

TITLE:
FIGURE 7.3 DITCHES SURVEYED AND
AREAS PROPOSED FOR VEGETATION
REMOVAL, PAGE 3 OF 8

PINS REFERENCE NUMBER:
EN010149/APP/6.2

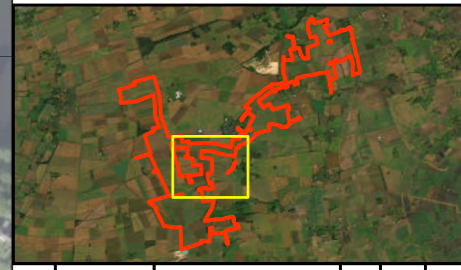
Scale: 1:35,000 @ A3

REV 01

502800 503000 503200 503400 503600 503800 504000 504200 504400 504600 504800 505000 505200



- LEGEND:**
- Order Limits
 - Proposed Indicative Location for Vegetation Removal
 - Watercourses



Rev	Date	Description	Drn	Chk	App
01	NOV 2024	DCO SUBMISSION	RSK	RSK	EDF

Springwell Solar Farm

DOCUMENT:
ENVIRONMENTAL STATEMENT
VOLUME 2: FIGURES
REGULATION 5(2)(a)

TITLE:
FIGURE 7.3 DITCHES SURVEYED AND
AREAS PROPOSED FOR VEGETATION
REMOVAL, PAGE 4 OF 8

PINS REFERENCE NUMBER:
EN010149/APP/6.2

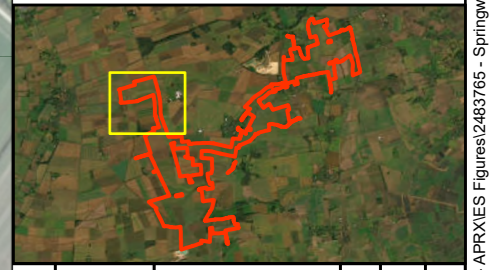
Scale: 1:35,000 @ A3

REV 01



LEGEND:

- Order Limits
- Proposed Indicative Location for Vegetation Removal
- Watercourses



Rev	Date	Description	Drn	Chk	App
01	NOV 2024	DCO SUBMISSION	RSK	RSK	EDF

Springwell Solar Farm

DOCUMENT:
ENVIRONMENTAL STATEMENT
VOLUME 2: FIGURES
REGULATION 5(2)(a)

TITLE:
FIGURE 7.3 DITCHES SURVEYED AND
AREAS PROPOSED FOR VEGETATION
REMOVAL, PAGE 5 OF 8

PINS REFERENCE NUMBER:
EN010149/APP/6.2

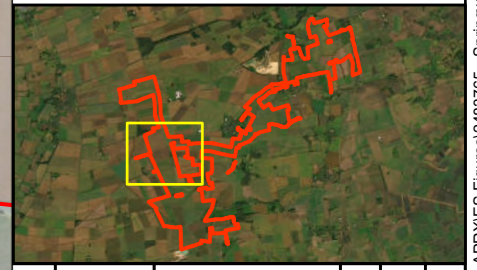
Scale: 1:35,000 @ A3

REV 01



LEGEND:

- Order Limits
- Proposed Indicative Location for Vegetation Removal
- Watercourses



Rev	Date	Description	Drn	Chk	App
01	NOV 2024	DCO SUBMISSION	RSK	RSK	EDF

Springwell Solar Farm

DOCUMENT:
ENVIRONMENTAL STATEMENT
VOLUME 2: FIGURES
REGULATION 5(2)(a)

TITLE:
FIGURE 7.3 DITCHES SURVEYED AND
AREAS PROPOSED FOR VEGETATION
REMOVAL, PAGE 6 OF 8

PINS REFERENCE NUMBER:
EN010149/APP/6.2

0 55 110 220

Metres

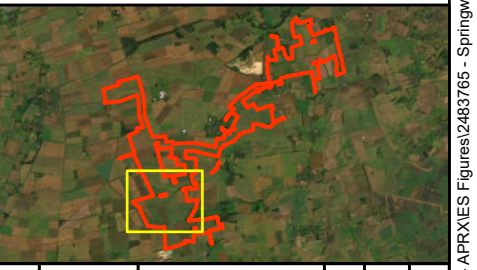
Scale: 1:35,000 @ A3

REV 01



LEGEND:

- Order Limits
- Proposed Indicative Location for Vegetation Removal
- Watercourses



Rev	Date	Description	Drn	Chk	App
01	NOV 2024	DCO SUBMISSION	RSK	RSK	EDF

Springwell Solar Farm

DOCUMENT:
ENVIRONMENTAL STATEMENT
VOLUME 2: FIGURES
REGULATION 5(2)(a)

TITLE:
FIGURE 7.3 DITCHES SURVEYED AND
AREAS PROPOSED FOR VEGETATION
REMOVAL, PAGE 7 OF 8

PINS REFERENCE NUMBER:
EN010149/APP/6.2

Scale: 1:35,000 @ A3

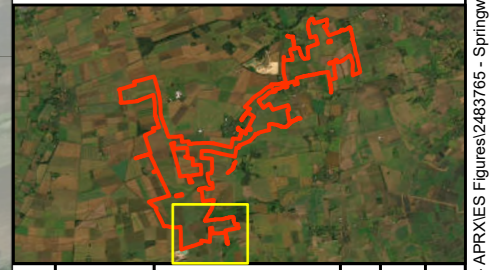
REV 01

502800 503000 503200 503400 503600 503800 504000 504200 504400 504600 504800 505000 505200



LEGEND:

- Order Limits
- Proposed Indicative Location for Vegetation Removal
- Watercourses



01	NOV 2024	DCO SUBMISSION	RSK	RSK	EDF
Rev	Date	Description	Drn	Chk	App

Springwell Solar Farm

DOCUMENT:
ENVIRONMENTAL STATEMENT
VOLUME 2: FIGURES
REGULATION 5(2)(a)

TITLE:
FIGURE 7.3 DITCHES SURVEYED AND
AREAS PROPOSED FOR VEGETATION
REMOVAL, PAGE 8 OF 8

PINS REFERENCE NUMBER:
EN010149/APP/6.2

Scale: 1:35,000 @ A3

REV 01

Path: C:\Users\rebekah.smyth\OneDrive - RSK Group\06 GIS - 2483765 - EDF Solar Springwell (aka Acre Lane)03 - APRXIES Figures\2483765 - Springwell Solar - Figure 7.3 - Ditches Surveyed and Areas Proposed for Vegetation Removal.aprx[empty]

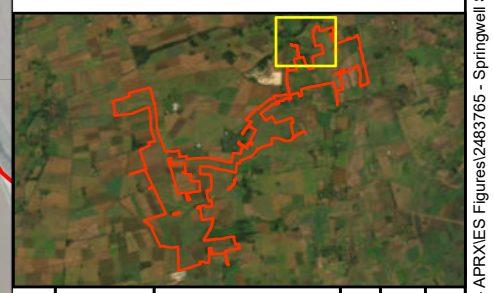


LEGEND:

- Order Limits
- Proposed Indicative Location for Vegetation Removal

Important Hedgerow

- Yes
- No



Rev	Date	Description	Drn	Chk	App
01	NOV 2024	DCO SUBMISSION	RSK	RSK	EDF

Springwell Solar Farm

DOCUMENT:
ENVIRONMENTAL STATEMENT
VOLUME 2: FIGURES
REGULATION 5(2)(a)

TITLE:
FIGURE 7.4 IMPORTANT HEDGEROW
SURVEY AND AREAS PROPOSED FOR
VEGETATION REMOVAL, PAGE 1 OF 16

PINS REFERENCE NUMBER:
EN010149/APP/6.2

Scale: 1:6,000 @ A3

REV 01

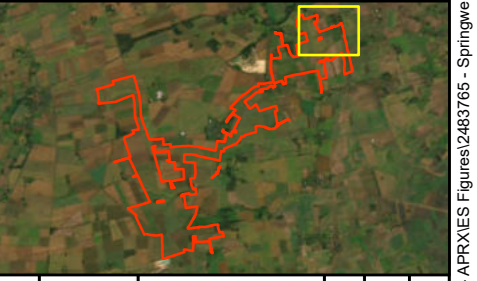


LEGEND:

- Order Limits
- Proposed Indicative Location for Vegetation Removal

Important Hedgerow

- Yes
- No



Rev	Date	Description	Drn	Chk	App
01	NOV 2024	DCO SUBMISSION	RSK	RSK	EDF

Springwell Solar Farm

DOCUMENT:
ENVIRONMENTAL STATEMENT
VOLUME 2: FIGURES
REGULATION 5(2)(a)

TITLE:
FIGURE 7.4 IMPORTANT HEDGEROW
SURVEY AND AREAS PROPOSED FOR
VEGETATION REMOVAL, PAGE 2 OF 16

PINS REFERENCE NUMBER:
EN010149/APP/6.2

Scale: 1:6,000 @ A3

REV 01

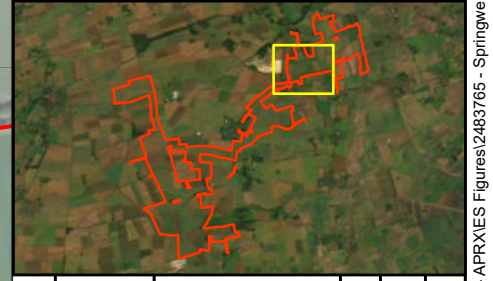


LEGEND:

- Order Limits
- Proposed Indicative Location for Vegetation Removal

Important Hedgerow

- Yes
- No
- No Hedge



Rev	Date	Description	Drn	Chk	App
01	NOV 2024	DCO SUBMISSION	RSK	RSK	EDF

Springwell Solar Farm

DOCUMENT:
ENVIRONMENTAL STATEMENT
VOLUME 2: FIGURES
REGULATION 5(2)(a)

TITLE:
FIGURE 7.4 IMPORTANT HEDGEROW
SURVEY AND AREAS PROPOSED FOR
VEGETATION REMOVAL, PAGE 3 OF 16

PINS REFERENCE NUMBER:
EN010149/APP/6.2

Metres

Scale: 1:6,000 @ A3

REV 01

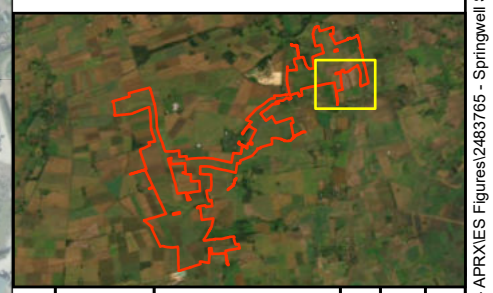


LEGEND:

- Order Limits
- Proposed Indicative Location for Vegetation Removal

Important Hedgerow

- Yes
- No



Rev	Date	Description	Drn	Chk	App
01	NOV 2024	DCO SUBMISSION	RSK	RSK	EDF

Springwell Solar Farm

DOCUMENT:
ENVIRONMENTAL STATEMENT
VOLUME 2: FIGURES
REGULATION 5(2)(a)

TITLE:
FIGURE 7.4 IMPORTANT HEDGEROW
SURVEY AND AREAS PROPOSED FOR
VEGETATION REMOVAL, PAGE 4 OF 16

PINS REFERENCE NUMBER:
EN010149/APP/6.2

0 40 80 160

Metres

Scale: 1:6,000 @ A3

REV 01

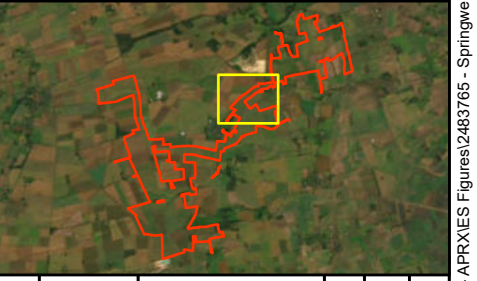


LEGEND:

- Order Limits
- Proposed Indicative Location for Vegetation Removal

Important Hedgerow

- Yes
- No
- No Hedge



Rev	Date	Description	Drn	Chk	App
01	NOV 2024	DCO SUBMISSION	RSK	RSK	EDF

Springwell Solar Farm

DOCUMENT:
ENVIRONMENTAL STATEMENT
VOLUME 2: FIGURES
REGULATION 5(2)(a)

TITLE:
FIGURE 7.4 IMPORTANT HEDGEROW
SURVEY AND AREAS PROPOSED FOR
VEGETATION REMOVAL, PAGE 5 OF 16

PINS REFERENCE NUMBER:
EN010149/APP/6.2

Metres

Scale: 1:6,000 @ A3

REV 01

505600 505800 506000 506200 506400 506600 506800 507000 507200 507400

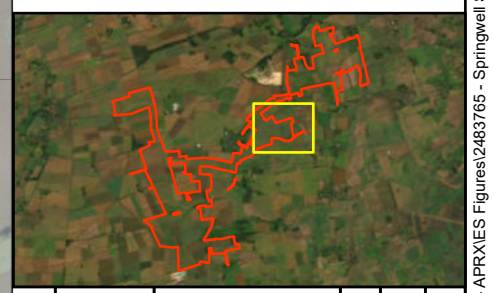


LEGEND:

- Order Limits
- Proposed Indicative Location for Vegetation Removal

Important Hedgerow

- Yes
- No
- No Hedge
- Historic Hedge



Rev	Date	Description	Drn	Chk	App
01	NOV 2024	DCO SUBMISSION	RSK	RSK	EDF

Springwell Solar Farm

DOCUMENT:
ENVIRONMENTAL STATEMENT
VOLUME 2: FIGURES
REGULATION 5(2)(a)

TITLE:
FIGURE 7.4 IMPORTANT HEDGEROW
SURVEY AND AREAS PROPOSED FOR
VEGETATION REMOVAL, PAGE 6 OF 16

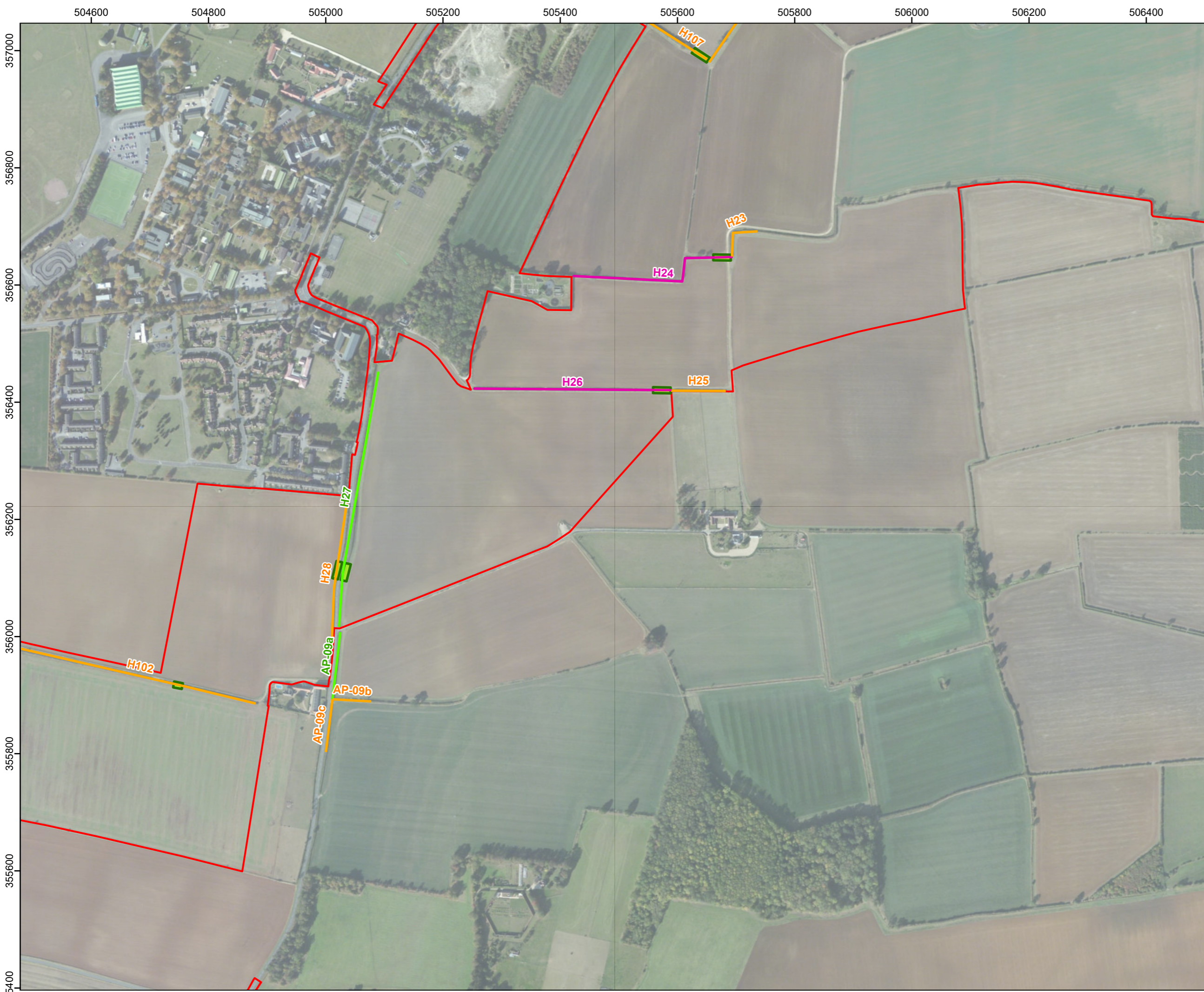
PINS REFERENCE NUMBER:
EN010149/APP/6.2

0 40 80 160

Metres

Scale: 1:6,000 @ A3

REV 01

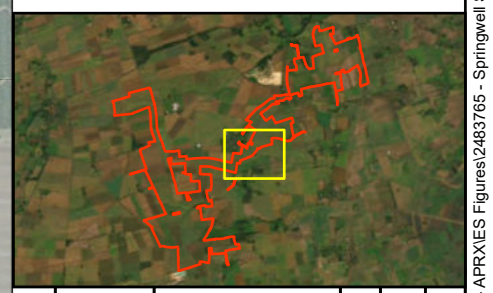


LEGEND:

- Order Limits
- Proposed Indicative Location for Vegetation Removal

Important Hedgerow

- Yes
- No
- Historic Hedge



Rev	Date	Description	Drn	Chk	App
01	NOV 2024	DCO SUBMISSION	RSK	RSK	EDF

Springwell Solar Farm

DOCUMENT:
ENVIRONMENTAL STATEMENT
VOLUME 2: FIGURES
REGULATION 5(2)(a)

TITLE:
FIGURE 7.4 IMPORTANT HEDGEROW
SURVEY AND AREAS PROPOSED FOR
VEGETATION REMOVAL, PAGE 7 OF 16

PINS REFERENCE NUMBER:
EN010149/APP/6.2

Scale: 1:6,000 @ A3

REV 01

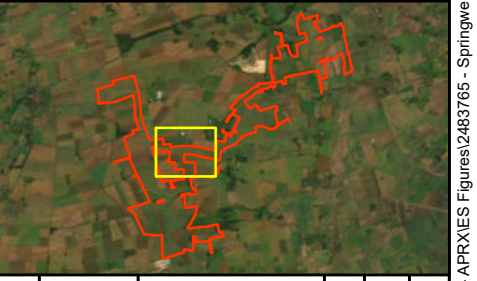


LEGEND:

- Order Limits
- Proposed Indicative Location for Vegetation Removal

Important Hedgerow

- No
- No Hedge



Rev	Date	Description	Drn	Chk	App
01	NOV 2024	DCO SUBMISSION	RSK	RSK	EDF

Springwell Solar Farm

DOCUMENT:
ENVIRONMENTAL STATEMENT
VOLUME 2: FIGURES
REGULATION 5(2)(a)

TITLE:
FIGURE 7.4 IMPORTANT HEDGEROW
SURVEY AND AREAS PROPOSED FOR
VEGETATION REMOVAL, PAGE 8 OF 16

PINS REFERENCE NUMBER:
EN010149/APP/6.2

Scale: 1:6,000 @ A3

REV 01

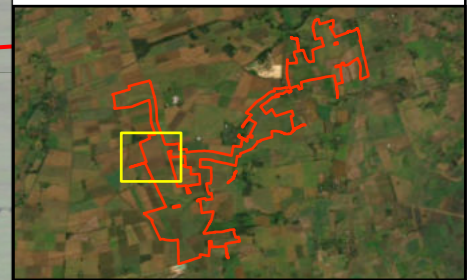


LEGEND:

- Order Limits
- Proposed Indicative Location for Vegetation Removal

Important Hedgerow

- Yes
- No
- No Hedge



Rev	Date	Description	Drn	Chk	App
01	NOV 2024	DCO SUBMISSION	RSK	RSK	EDF

Springwell Solar Farm

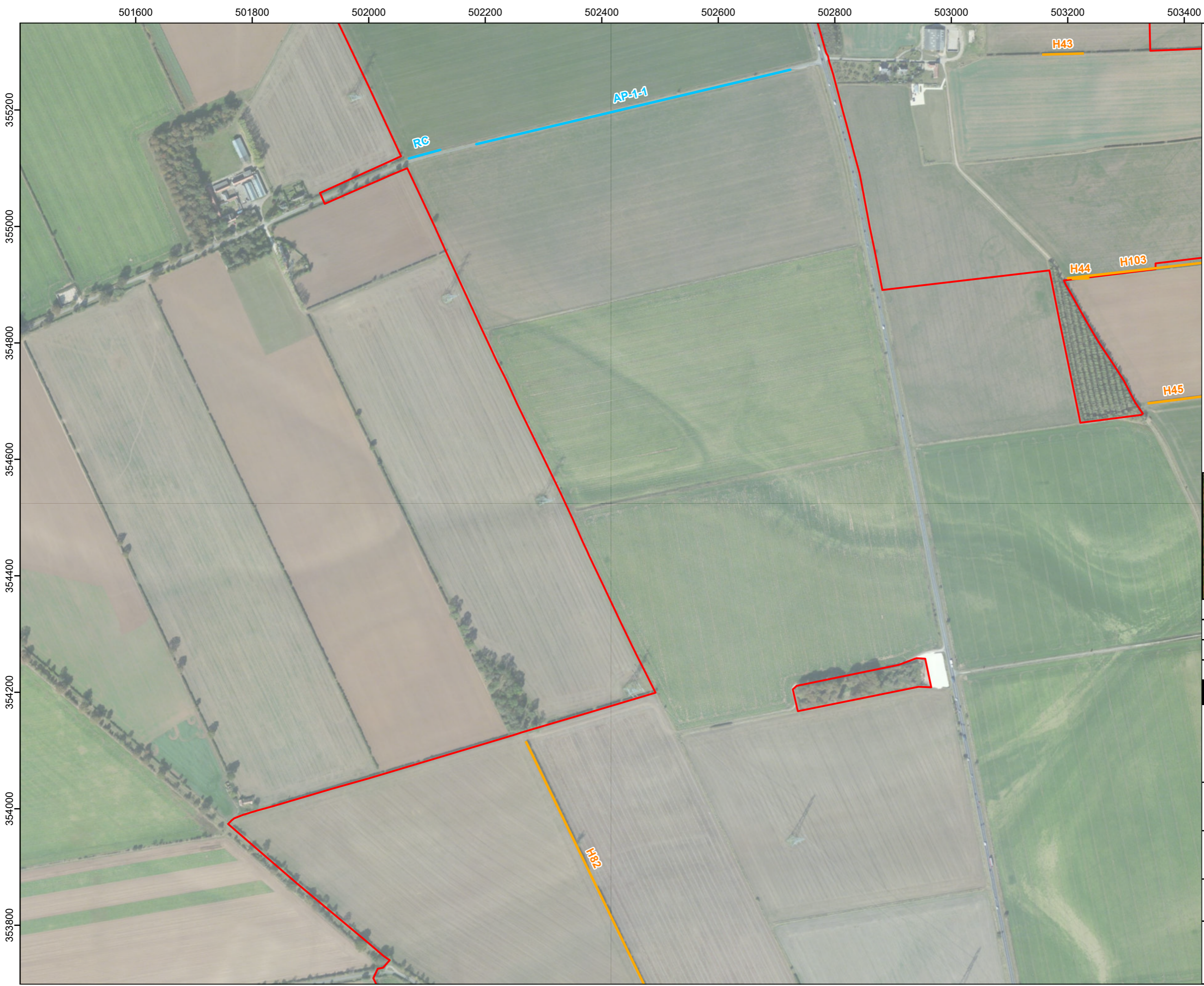
DOCUMENT:
ENVIRONMENTAL STATEMENT
VOLUME 2: FIGURES
REGULATION 5(2)(a)

TITLE:
FIGURE 7.4 IMPORTANT HEDGEROW
SURVEY AND AREAS PROPOSED FOR
VEGETATION REMOVAL, PAGE 9 OF 16

PINS REFERENCE NUMBER:
EN010149/APP/6.2

Scale: 1:6,000 @ A3

REV 01

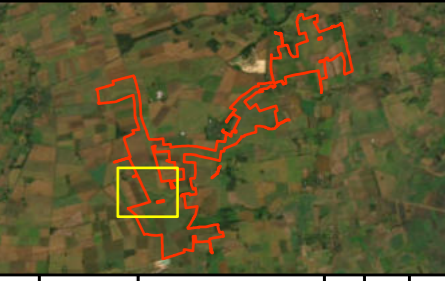


LEGEND:

- Order Limits
- Proposed Indicative Location for Vegetation Removal

Important Hedgerow

- No
- No Hedge



Rev	Date	Description	Drn	Chk	App
01	NOV 2024	DCO SUBMISSION	RSK	RSK	EDF

Springwell Solar Farm

DOCUMENT:
ENVIRONMENTAL STATEMENT
VOLUME 2: FIGURES
REGULATION 5(2)(a)

TITLE:
FIGURE 7.4 IMPORTANT HEDGEROW
SURVEY AND AREAS PROPOSED FOR
VEGETATION REMOVAL, PAGE 10 OF 16

PINS REFERENCE NUMBER:
EN010149/APP/6.2

0 40 80 160

Metres

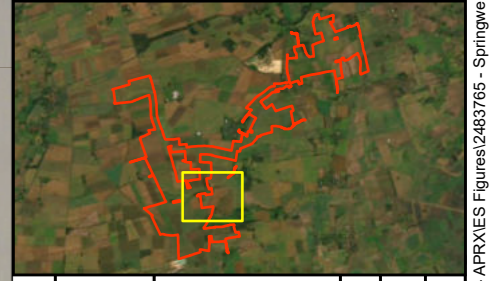
Scale: 1:6,000 @ A3

REV 01



LEGEND:

- Order Limits
- Proposed Indicative Location for Vegetation Removal
- Important Hedgerow
- No



Rev	Date	Description	Drn	Chk	App
01	NOV 2024	DCO SUBMISSION	RSK	RSK	EDF

Springwell Solar Farm

DOCUMENT:
ENVIRONMENTAL STATEMENT
VOLUME 2: FIGURES
REGULATION 5(2)(a)

TITLE:
FIGURE 7.4 IMPORTANT HEDGEROW
SURVEY AND AREAS PROPOSED FOR
VEGETATION REMOVAL, PAGE 11 OF 16

PINS REFERENCE NUMBER:
EN010149/APP/6.2

Scale: 1:6,000 @ A3

REV 01

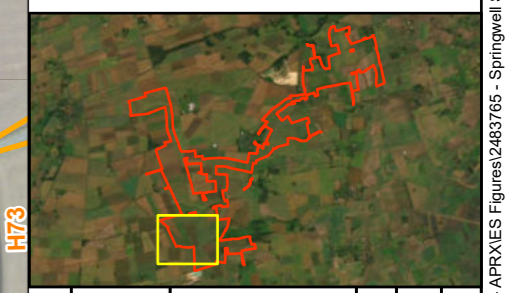


LEGEND:

- Order Limits
- Proposed Indicative Location for Vegetation Removal

Important Hedgerow

- Yes
- No



Rev	Date	Description	Drn	Chk	App
01	NOV 2024	DCO SUBMISSION	RSK	RSK	EDF

Springwell Solar Farm

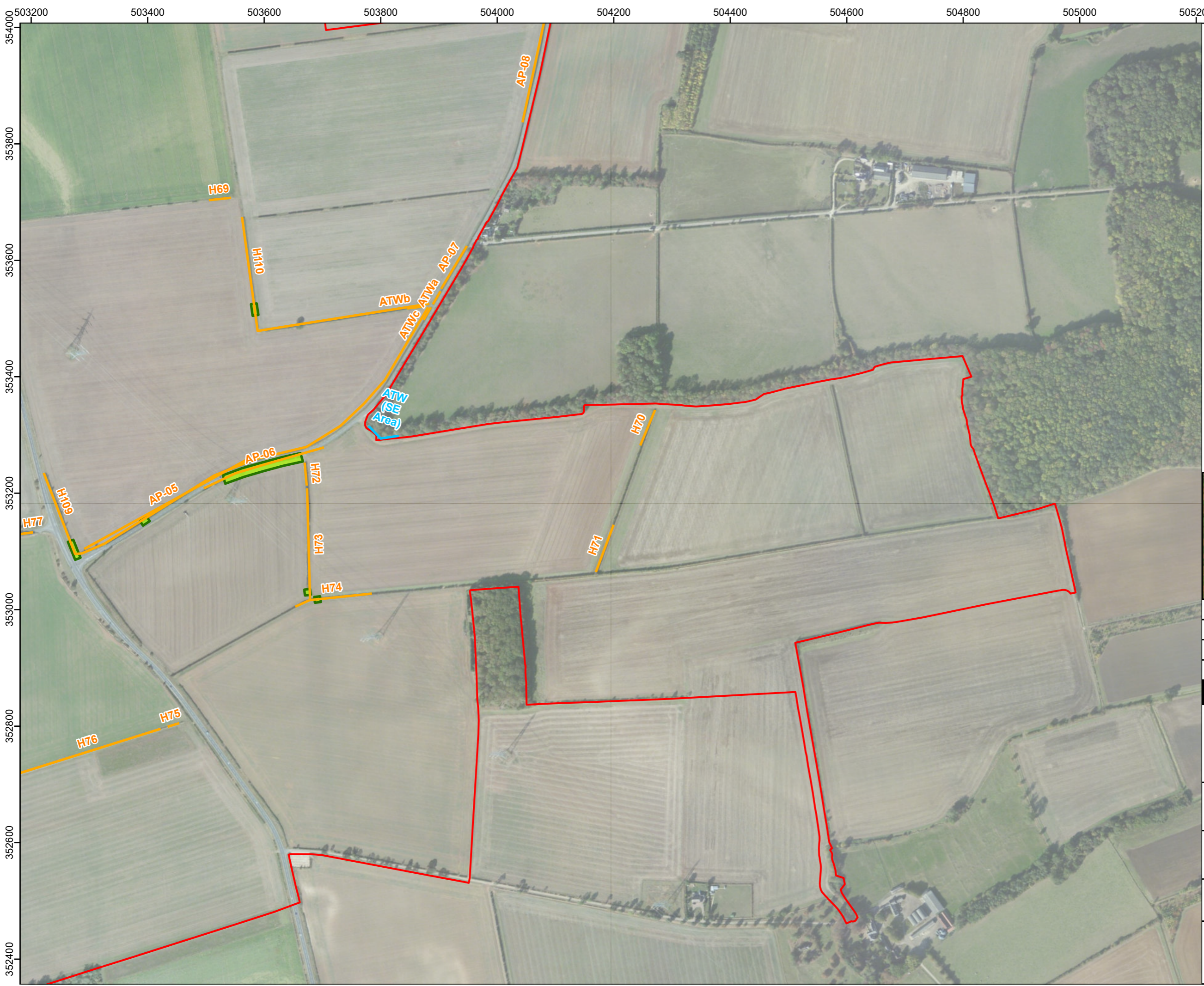
DOCUMENT:
ENVIRONMENTAL STATEMENT
VOLUME 2: FIGURES
REGULATION 5(2)(a)

TITLE:
FIGURE 7.4 IMPORTANT HEDGEROW
SURVEY AND AREAS PROPOSED FOR
VEGETATION REMOVAL, PAGE 12 OF 16

PINS REFERENCE NUMBER:
EN010149/APP/6.2

Scale: 1:6,000 @ A3

REV 01

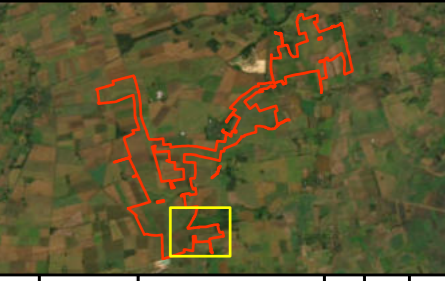


LEGEND:

- Order Limits
- Proposed Indicative Location for Vegetation Removal

Important Hedgerow

- No
- No Hedge



Rev	Date	Description	Drn	Chk	App
01	NOV 2024	DCO SUBMISSION	RSK	RSK	EDF

Springwell Solar Farm

DOCUMENT:
ENVIRONMENTAL STATEMENT
VOLUME 2: FIGURES
REGULATION 5(2)(a)

TITLE:
FIGURE 7.4 IMPORTANT HEDGEROW
SURVEY AND AREAS PROPOSED FOR
VEGETATION REMOVAL, PAGE 13 OF 16

PINS REFERENCE NUMBER:
EN010149/APP/6.2

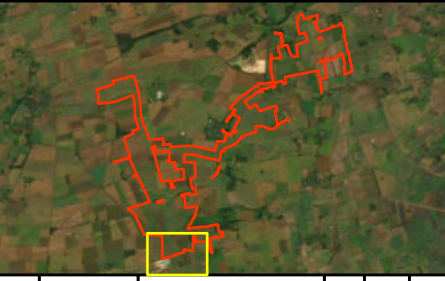
Scale: 1:6,000 @ A3

REV 01



LEGEND:

- Order Limits
- Proposed Indicative Location for Vegetation Removal
- Important Hedgerow
- No



Rev	Date	Description	Drn	Chk	App
01	NOV 2024	DCO SUBMISSION	RSK	RSK	EDF

Springwell Solar Farm

DOCUMENT:
ENVIRONMENTAL STATEMENT
VOLUME 2: FIGURES
REGULATION 5(2)(a)

TITLE:
FIGURE 7.4 IMPORTANT HEDGEROW
SURVEY AND AREAS PROPOSED FOR
VEGETATION REMOVAL, PAGE 14 OF 16

PINS REFERENCE NUMBER:
EN010149/APP/6.2

Scale: 1:6,000 @ A3

REV 01

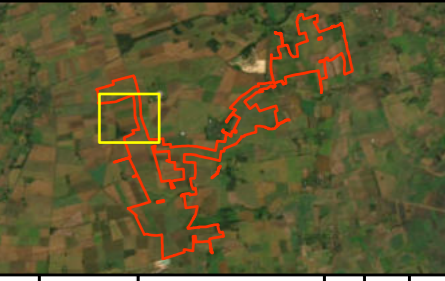


LEGEND:

- Order Limits
- Proposed Indicative Location for Vegetation Removal

Important Hedgerow

- Yes
- No
- No Hedge



Rev	Date	Description	Drn	Chk	App
01	NOV 2024	DCO SUBMISSION	RSK	RSK	EDF

Springwell Solar Farm

DOCUMENT:
ENVIRONMENTAL STATEMENT
VOLUME 2: FIGURES
REGULATION 5(2)(a)

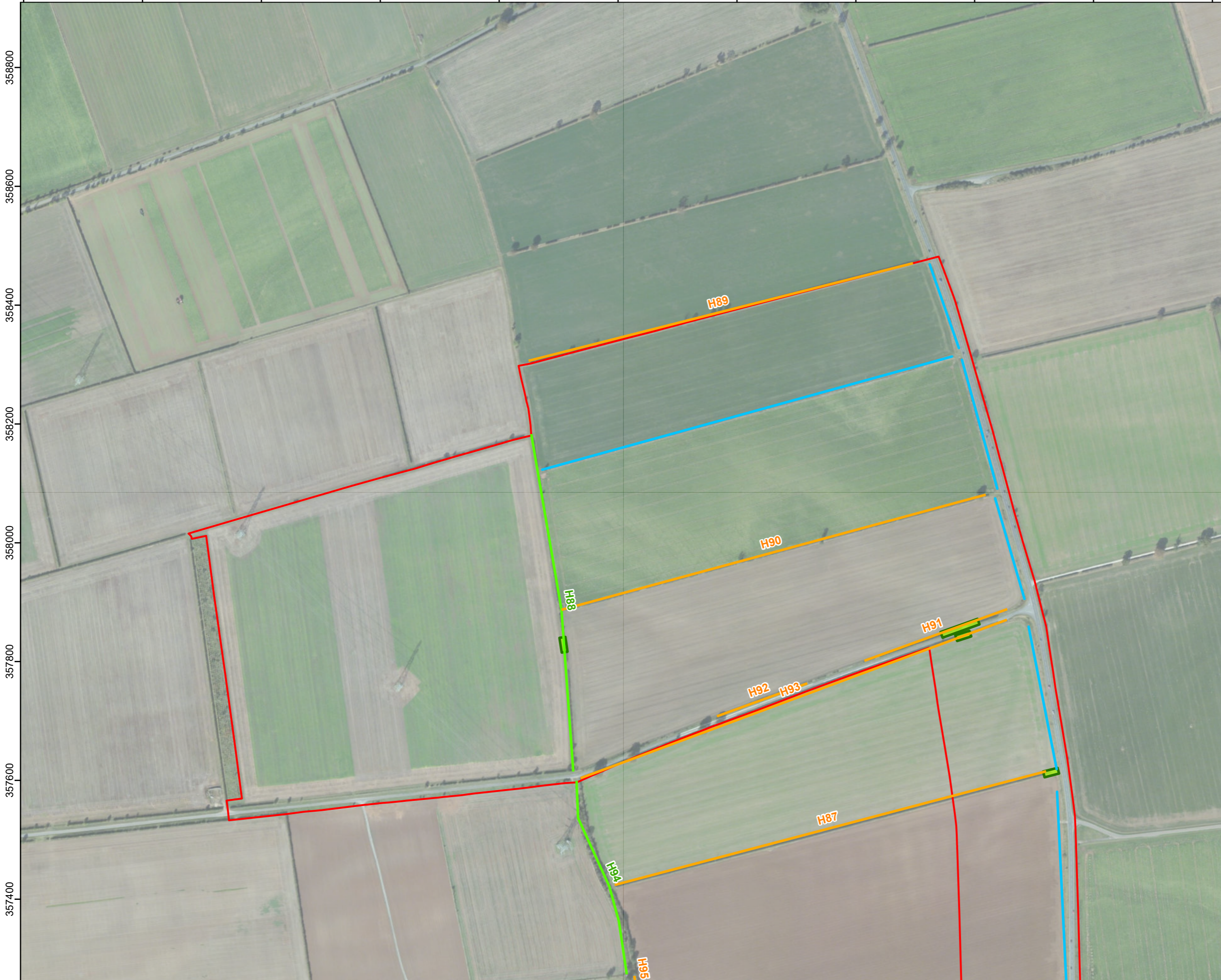
TITLE:
FIGURE 7.4 IMPORTANT HEDGEROW
SURVEY AND AREAS PROPOSED FOR
VEGETATION REMOVAL, PAGE 15 OF 16

PINS REFERENCE NUMBER:
EN010149/APP/6.2

Scale: 1:6,000 @ A3

REV 01

500400 500600 500800 501000 501200 501400 501600 501800 502000 502200 502400

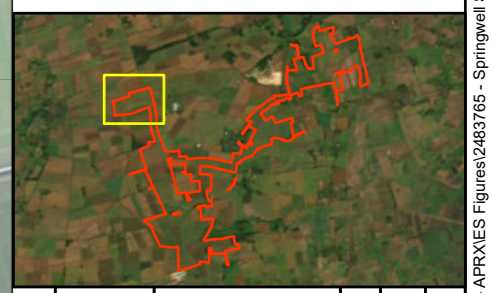


LEGEND:

- Order Limits
- Proposed Indicative Location for Vegetation Removal

Important Hedgerow

- Yes
- No
- No Hedge



01	NOV 2024	DCO SUBMISSION	RSK	RSK	EDF
Rev	Date	Description	Drn	Chk	App

Springwell Solar Farm

DOCUMENT:
ENVIRONMENTAL STATEMENT
VOLUME 2: FIGURES
REGULATION 5(2)(a)

TITLE:
FIGURE 7.4 IMPORTANT HEDGEROW
SURVEY AND AREAS PROPOSED FOR
VEGETATION REMOVAL, PAGE 16 OF 16

PINS REFERENCE NUMBER:
EN010149/APP/6.2

0 40 80 160

Metres

Scale: 1:6,000 @ A3

REV 01

